



WIND WITH PURPOSE

# Going Off Grid - KRI Wind Farm

March, 2023

Chris Kearney

Chief Executive Officer  
Wind With Purpose Pty Ltd



# Wind With Purpose: Background and Team

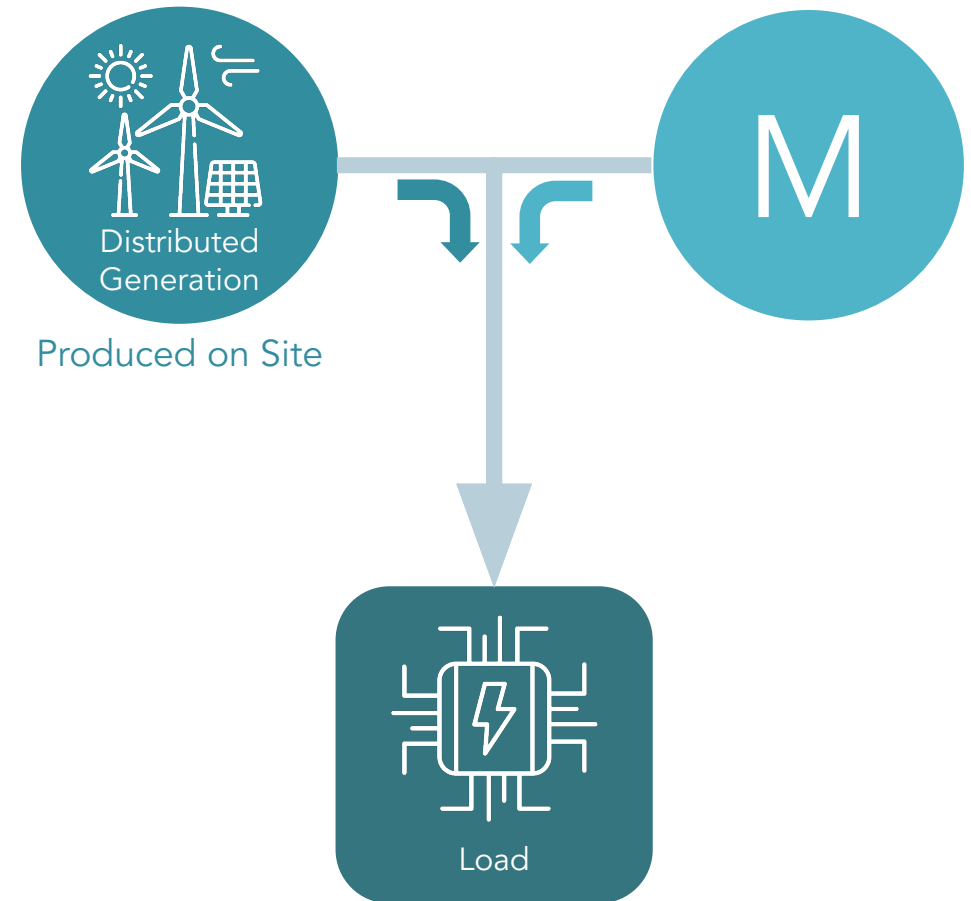
Wind With Purpose is an emerging global renewable energy company using embedded wind to help companies decarbonize.

KRI (Kwinana Rockingham Industrial) Wind Farm development started in 2016.

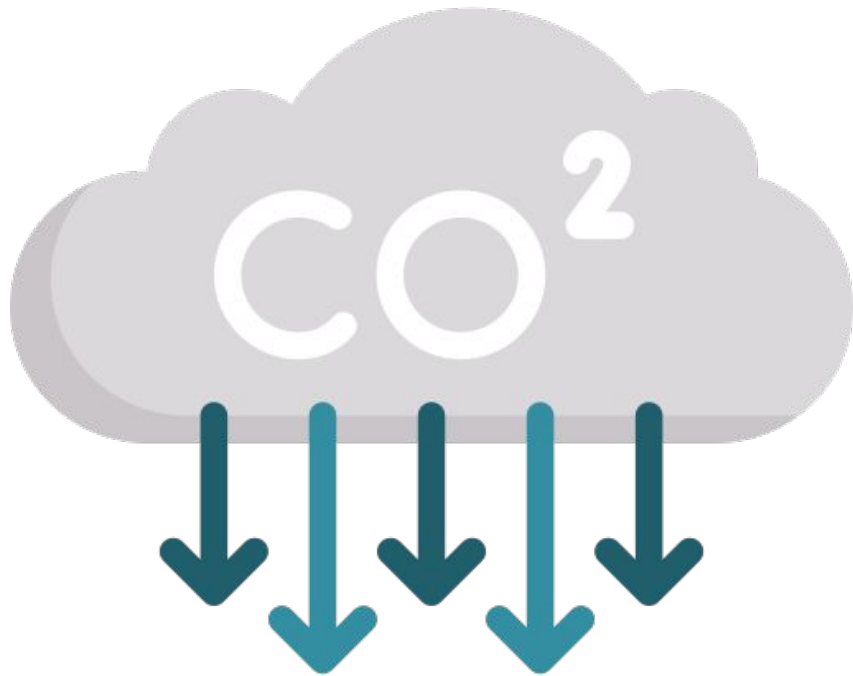
- Chris Kearney – CEO and Co-Founder: Over 8 years experience in project development, construction, operation and maintenance of wind farms in Australia. Background in Finance and Economics.
- Kym Dodd – Co-Founder: Over 16 years experience in project development, construction, operation and maintenance of wind farms in Australia. Owner of Professional Wind Services.
- Tristan Yuswak – Director: Over 5 years experience in project development, construction, operation and maintenance of hybrid power stations in Australia.
- David Thomas – Non-Executive Chairman: Over 30 year's experience as a director, financier, consultant, strategist and governance professional.



# BTM Wind Generation: Novel in Australian SIA's – Proven in Europe



# The Western Trade Coast Must Decarbonise



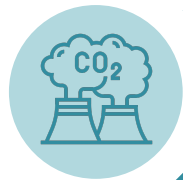
Heavy Industrial Companies urgently need to reduce and offset their carbon emissions.



Currently minimal access to embedded renewable energy.



Limited access to grid facing renewable energy at competitive price.



Australian Companies who export internationally are exposed to Carbon Border Adjustment Mechanism (CBAM)



# Building a Premium Western Australian Wind Energy Portfolio



Stage One

KRI Wind Farm will deliver embedded wind turbines in the industrial estate of Kwinana and Rockingham (60MW-120MW)



Stage Two

WTC Wind Farm will deliver embedded wind turbines in the industrial estates of Kwinana, Rockingham, Latitude32 and Henderson (~200MW)



Stage Three

Stage 3 will deliver a GW scale offshore wind farm called the Catalpa Offshore Wind Farm west of Garden Island (~2.5GW)



# Federal and State Government

1

Project aligns with WA State Governments Renewable Hydrogen Strategy

2

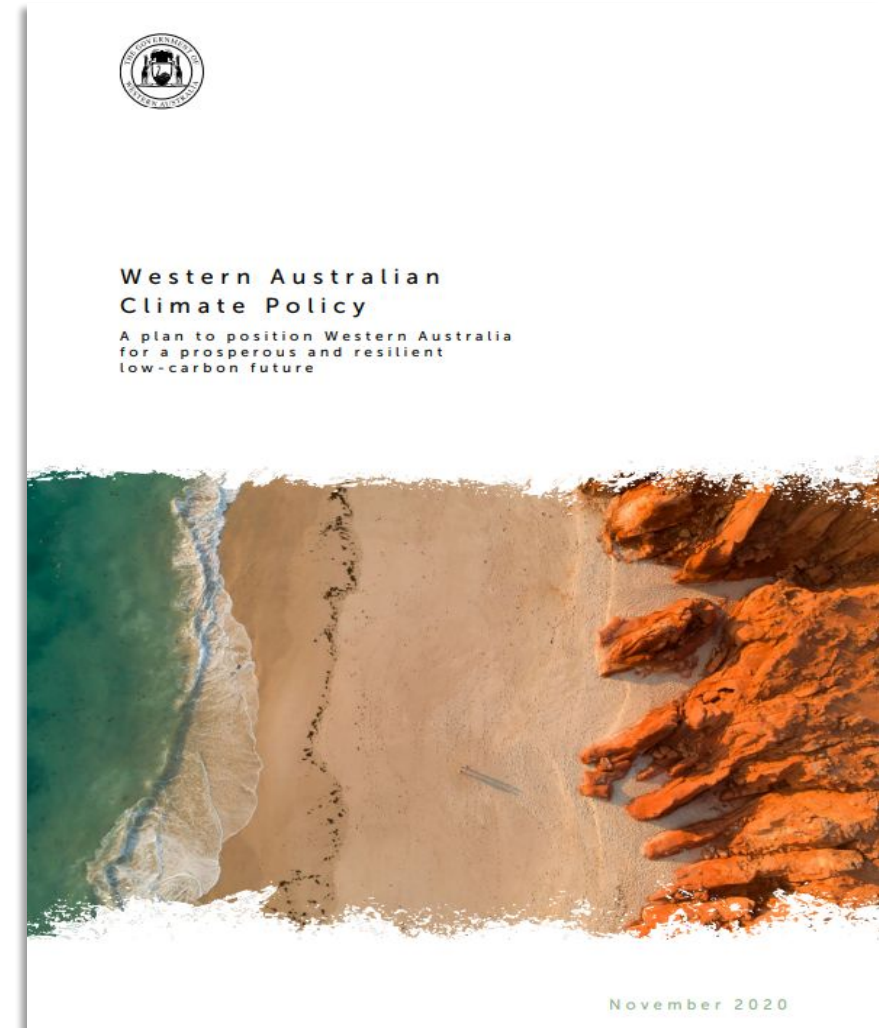
Supports WA State Governments Wind Turbine Manufacturing Initiative

3

Supports Western Trade Coast move towards Net Zero Emissions by 2050

4

Upskill WA Technicians for the Renewable Energy boom that has started and needs local skills urgently



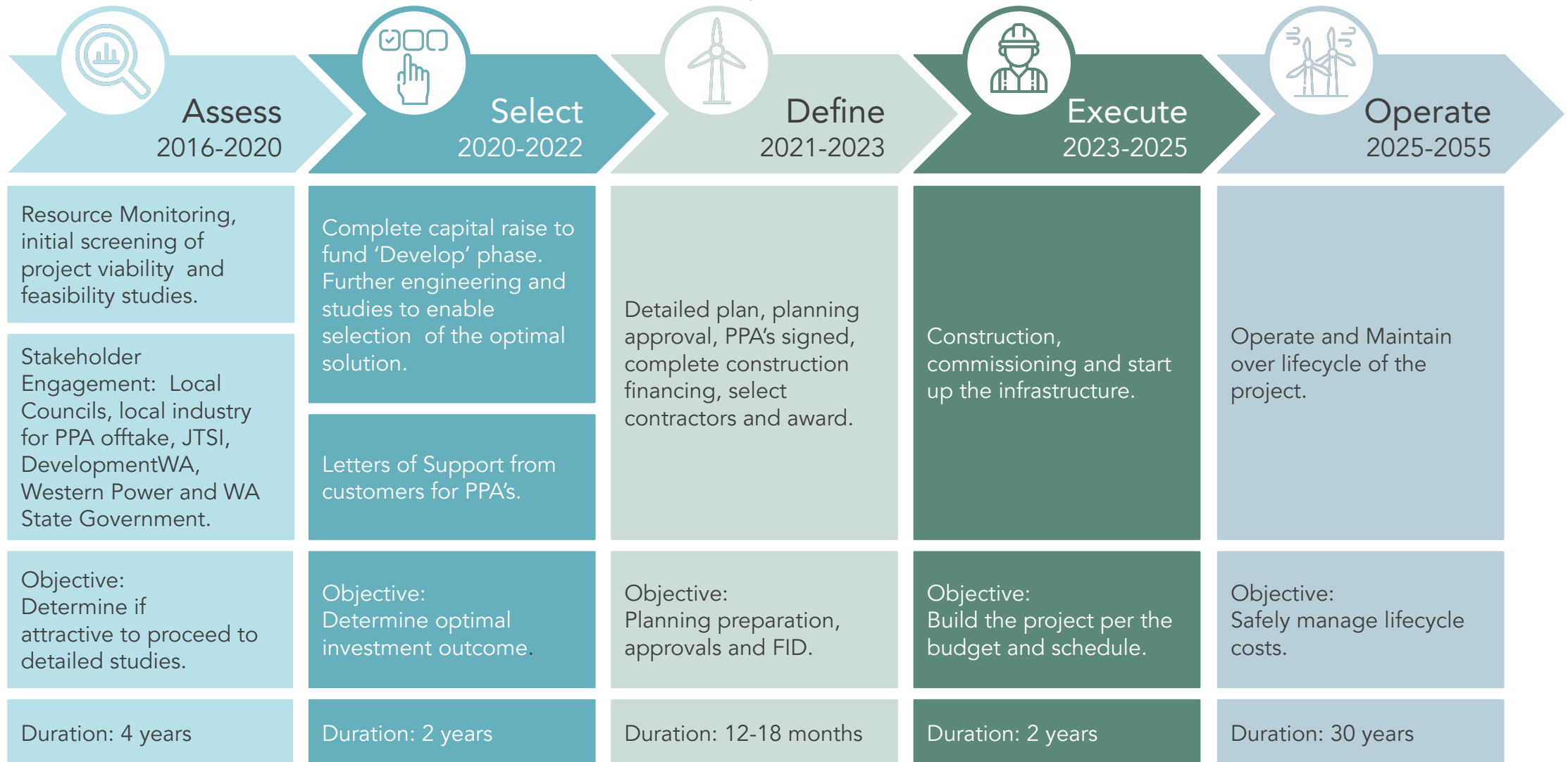
Source: [https://www.wa.gov.au/system/files/2020-12/Western\\_Australian\\_Climate\\_Policy.pdf](https://www.wa.gov.au/system/files/2020-12/Western_Australian_Climate_Policy.pdf)



# Project Timeline

Project is currently within the 'Define' phase for a typical wind delivery model

CURRENT STATUS



# KRI Wind Farm – Project Summary



## WIND FARM OVERVIEW:

- 10 - 20 Turbines
- 110-130 mtr Hub Height
- 75-85 mtr blade length
- Up to 120MW Capacity
- Energy yield up to 370GWhr per year
- Avoid up to 8mt CO2 over 30yr design life
- \$180 - \$320m Capex

## STATUS:

- 2yr wind & solar monitoring complete
- Meets all economic hurdles
- Western Power engagement since 2019
- Stakeholder engagement since 2016:
  - Federal and State Governments, DPC, JTSI, DPLH, DMIRS, EPA, Energy Policy WA, DevelopmentWA, Department of Defence, KIC, City of Kwinana, City of Rockingham and City of Cockburn.
- Letters of Support and MOU's for long term PPA's.





# KRI Wind Farm – The Role of Batteries



- Additional utilization of renewable energy
- Peak shaving when wind not available (battery can reduce max demand charges and lower tariff)
- Additional stabilization of wind energy output



# Q & A

Wind With Purpose Pty Ltd

Email: [info@windwithpurpose.com](mailto:info@windwithpurpose.com)

Website: [www.windwithpurpose.com](http://www.windwithpurpose.com)

Address: Level 7, 191 St Georges Terrace  
Perth WA 6000

